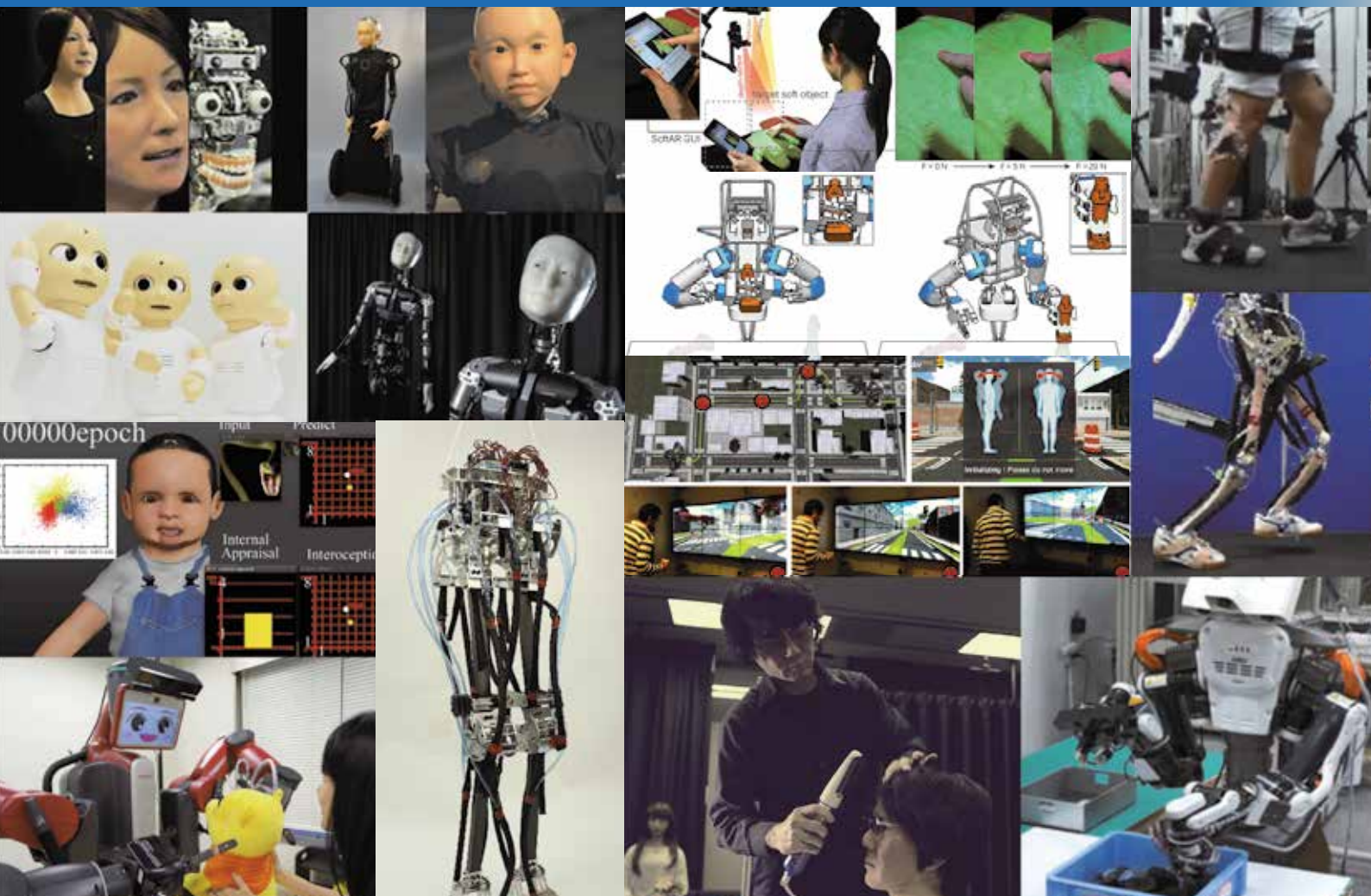


Graduate School of Engineering Science
OSAKA UNIVERSITY



2020 Engineering Science for the 21st Century Master's/PhD Program for Foreign Students

The Graduate School of Engineering Science, Osaka University features **two** programs in English sponsored by MEXT (Ministry of Education, Culture, Sports, Science and Technology):

- ◆ Special training program for Robotics Engineers
- ◆ Special training program for Biomechanical Engineering

Number of openings

- ◆ Program for Robotics Engineers: 5 Master's course positions
- ◆ Program for Biomechanical Engineering: 2 Master's course & 6 PhD course positions

Qualifications of applicants (excerpt)

(1) Education:

Master's course applicants are required to:

have completed 16 years of formal school education curriculum in countries other than Japan and either have received a Bachelor's degree, or expect to graduate from a university/college prior to the date of enrollment in the Master's course.

PhD course applicants are required to:

have a Master's degree course completed or expect to graduate prior to the date of enrollment in the PhD course.

(2) Language ability: Applicants are required to have sufficient understanding of English*.

* For details regarding qualifications for applicants, please contact us using the email found below.

Screening

The selection will be made based on the application documents and online interviews.

Scholarship benefits (excerpt)

- ◆ Students enrolled in Master's courses: 147,000 yen / month.
- ◆ Students enrolled in PhD courses : 148,000 yen / month.
- ◆ Tuition fee at Osaka University will be exempt.

Application deadline

November 30, 2019

Program start date

October 1, 2020

Program web page

<https://www.es.osaka-u.ac.jp/en/admission-aid/mext-granted/>



[Further Information]

Contact the Graduate Students Section: ki-daigakuin@office.osaka-u.ac.jp
ES webpage: <https://www.es.osaka-u.ac.jp/en/>
Graduate School of Engineering Science, Osaka University, Japan

